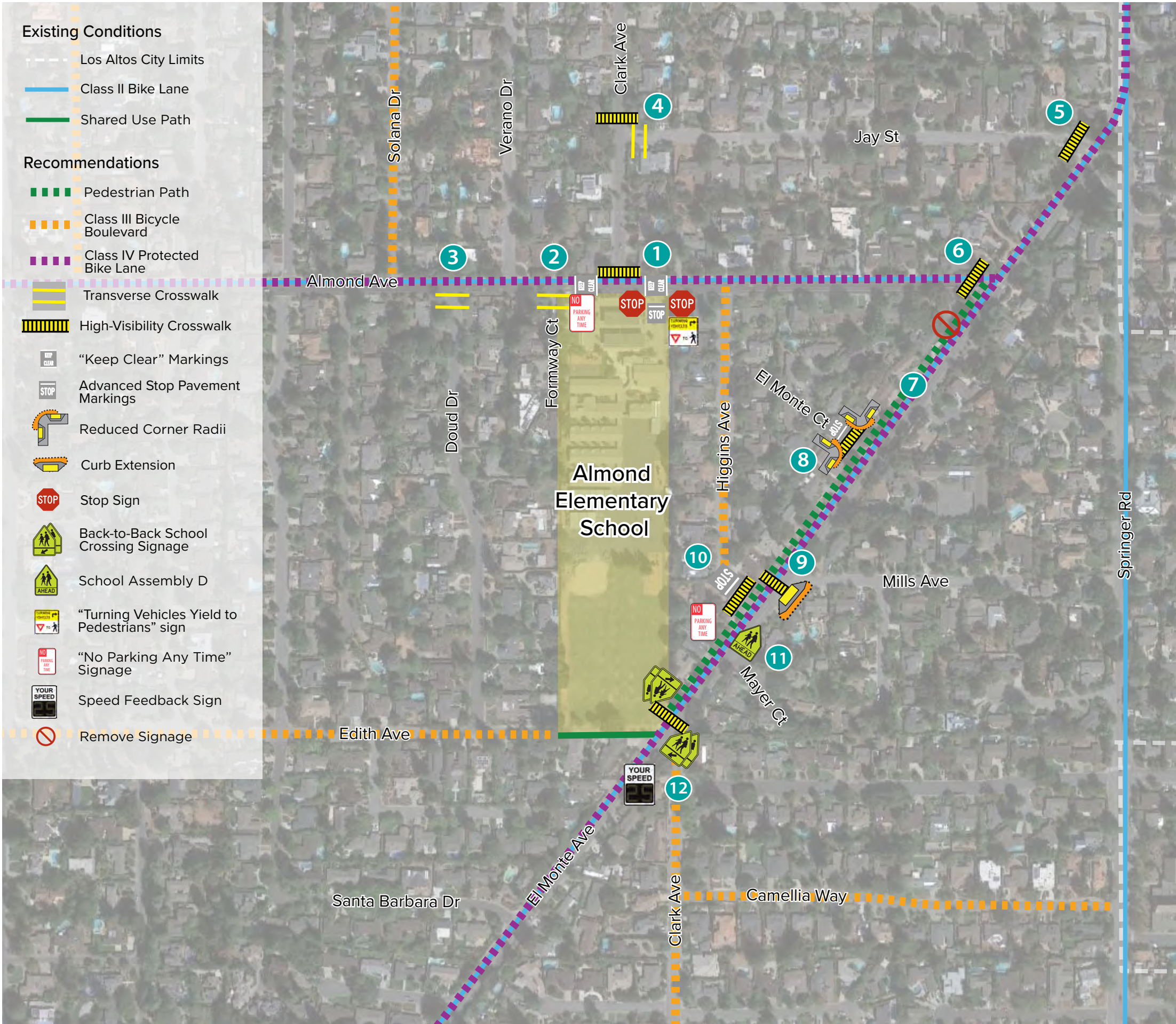


Safe Routes to Schools Improvement Plan  
Almond Elementary School  
Los Altos, CA

School Safety Assessment held February 2021



- 1 School driveway loop (Almond Ave)**
  - 1a. Upgrade N Clark Ave crosswalk to high-visibility
  - 1b. Install "Keep Clear" pavement markings in front of school driveway (entrance and exit)
  - 1c. Install stop sign on both sides of driveway exit
  - 1d. Install advance stop lines at driveway exit
  - 1e. Install "Turning Vehicles Yield to Bikes and Pedestrians" signage at driveway exit
  - 1f. Restrict parking adjacent to crosswalk across Almond Ave
- 2 Almond Ave and Formway Ct**
  - 2a. Install transverse crosswalk
- 3 Almond Ave and Doud Dr**
  - 3a. Install transverse crosswalk
- 4 N Clark Ave and Jay St**
  - 4a. Install high-visibility crosswalk across Clark Ave
  - 4b. Install yellow transverse crosswalk on east leg of intersection (crossing Jay Street)
- 5 Jay St and El Monte Ave**
  - 5a. Install high-visibility crosswalks across Jay St
- 6 Almond Ave and El Monte Ave**
  - 6a. Install high-visibility crosswalks across Almond Ave
- 7 El Monte Ave**
  - 7a. Remove existing school signage
  - 7b. Install pedestrian path along west side of El Monte (between Clark Ave and Almond Ave)
  - 7c. Install "No Parking Any Time" signage" along pedestrian path
- 8 El Monte Ave and El Monte Court**
  - 8a. Install high-visibility crosswalk
  - 8b. Install 4'-wide green bike crossing
  - 8c. Install advance stop lines
  - 8d. Reduce curb radii
  - 8e. Install "Turning Vehicles Yield to Bikes and Pedestrians" signage

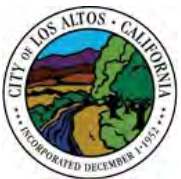
continued

NOTES:

- 1) The above items are recommendations only and based on Safe Routes to Schools site assessment best practices. Feasibility determination, final design, accessibility, funding, and implementation of any recommended improvements is the responsibility of the appropriate governing agency.
- 2) Red curb and/or parking restriction signage should be provided between advance stop/yield markings and the crosswalk. Exact red curb distance should be determined in accordance with the CA-MUTCD and City policies/standards.

0 300 ft 600 ft

Improvements not to scale





*continued from previous page*

- 9

El Monte Ave and Mills Ave

9a. Install high-visibility crosswalk across El Monte Ave, south of Mills Ave

9b. Install curb extension with ADA curb ramp improvements on east side of crosswalk
- 10

El Monte Ave and Mayer Ct

10a. Install “School Ahead” Assembly D signage
- 11

El Monte Ave and Higgins Ave

11a. Install high-visibility crosswalk

11b. Install advance stop lines

11c. Install “Turning Vehicles Yield to Bikes and Pedestrians” signage
- 12

El Monte Ave and S Clark Ave

12a. Add School Crossing signs to back of existing signs, and update all signs to most current assembly

12b. Refresh raised crosswalk striping

12c. Install speed feedback sign

**General Recommendations**

- Conduct ADA Ramp Assessment
- Conduct sign audit to ensure all signs are current
- Add yellow reflector bands to all school signs